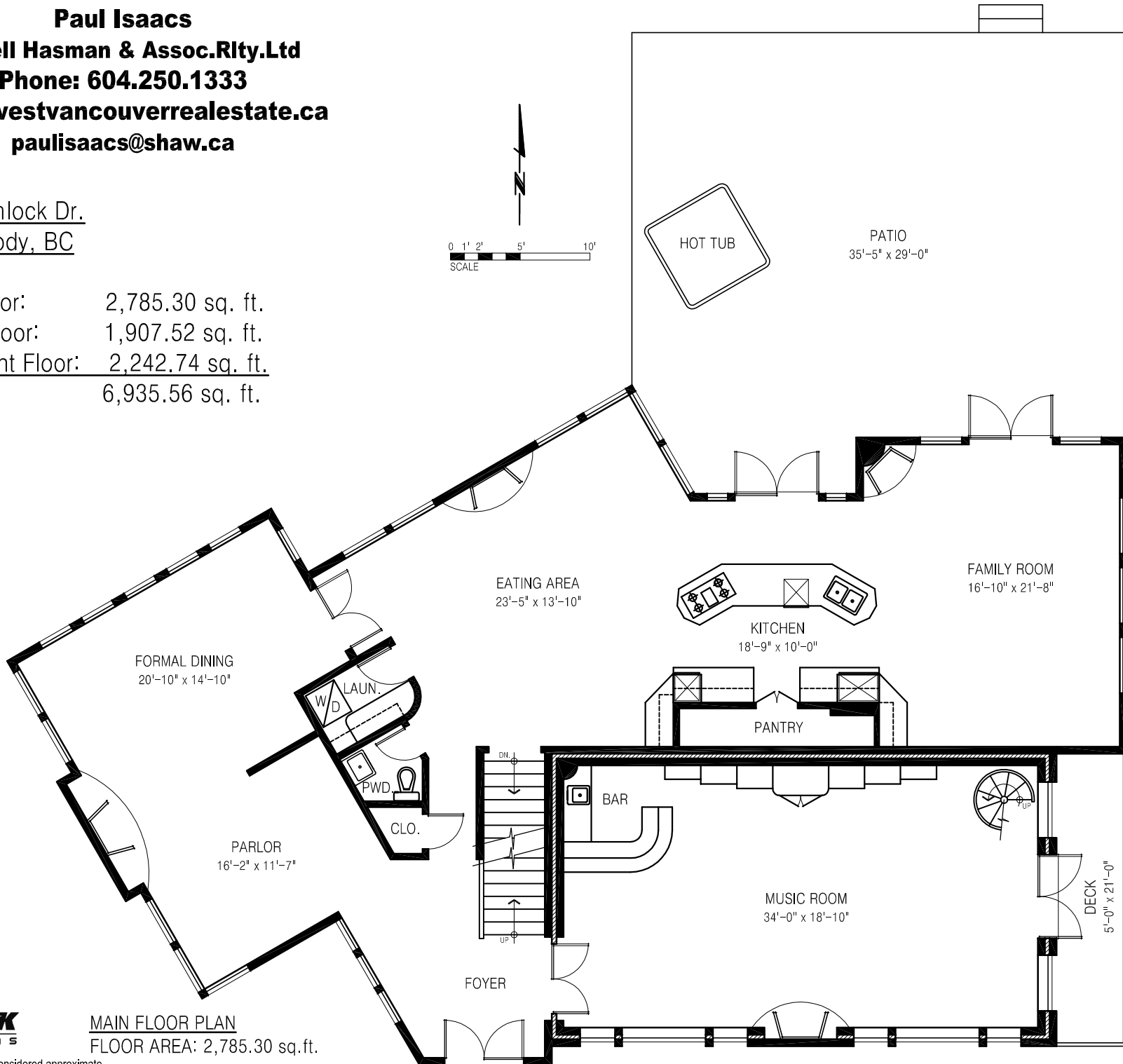
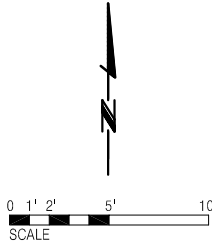


Paul Isaacs
Angell Hasman & Assoc.Rlty.Ltd
Phone: 604.250.1333
www.westvancouverrealestate.ca
paulisaacs@shaw.ca

120 Hemlock Dr.
Port Moody, BC

Main Floor: 2,785.30 sq. ft.
 Upper Floor: 1,907.52 sq. ft.
 Basement Floor: 2,242.74 sq. ft.
 Total: 6,935.56 sq. ft.



PIXILINK
 SOLUTIONS
 604-338-9964

MAIN FLOOR PLAN
 FLOOR AREA: 2,785.30 sq.ft.

Room sizes should be considered approximate.